

SMA 600

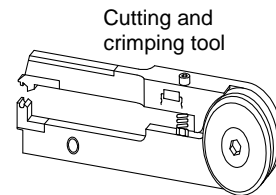
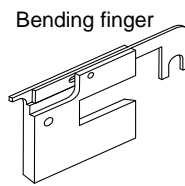
– Axial processing –

Universal cutting, bending and beading machine for belted components with axial leads

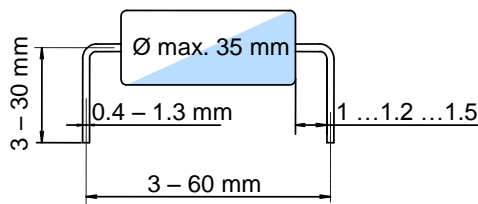
Characteristics:

- Lead diameters from 0.4 to 1.3 mm without tool changes
- Belt spacing 5, 10 and 15 mm
- Output adjustable up to max. 8,000 units/hour (depends on belt quality and lead diameter)
- Components are always tension released during processing (4-5 kg elastic)
- Safe and strain-free handling of the components by bending rolls with adjustable pressure
- Crimping deepness continuously adjustable
- Bending angle also adjustable
- Pitch (2,5 – 60 mm) and pin length (3 – 30 mm) can be read and continuously adjusted over a digital display
- Parameters and belt width are adjustable with turning knobs (located outside the machine)
- Repetitive accuracy of parameters ± 0.05 mm
- Machine is PLC-controlled (Siemens) and switches off automatically under the following conditions: nominal pieces reached, end of or failure in belt
- Electronic counter
- Tools are driven by cam discs
- Electric drive with tooth belt (three-phase motor)
- Machine is very low-maintenance, since linear guides are located at flexible components (feed unit, bending unit, tension release, belt feeding)
- Belt feeding takes place at the front of the machine
- End of belt slides out at the back side of the machine
- Components drop into ESD-box below the machine
- Operation voltage: 230V/50Hz (standard), other voltages are available on demand
- Length x width x height (without accessories): 600 x 390 x 410 mm
- Weight: approx. 53 kg (without accessories)

- Easy changeable tools (2-3 min) facilitate the production of the below mentioned standard forms
- Special shapes are also possible
- Tools are made with carbide to guarantee high durability
- Tools illustration:



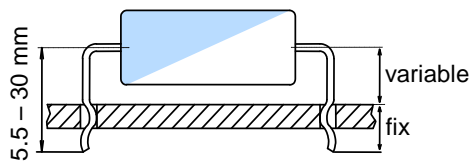
Bending form 1:



Bending form 1:

Cutting and bending from 0.4 – 1.3 mm wire diameters
Body diameter: max. 35 mm
With a printed board thickness of 1.6 mm, the lead penetration depth is then 1.5 ± 0.1 mm (standard).
Distance between body and bending radius depends on width of the used bending finger
Options: 1.0 ... 1.2 ... 1.5 mm (standard = 1.5 mm)

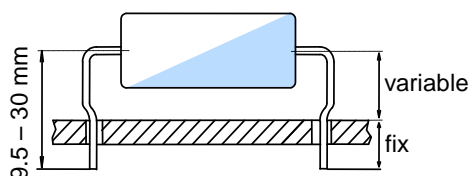
Bending form 2:



Bending form 2:

Snap-in cutting, bending and crimping
Wire diameters from 0.4 – 0.9 mm
Body diameter: max. 35 mm
With a printed board thickness of 1.6 mm, the lead penetration depth is then 1.5 ± 0.1 mm (standard).

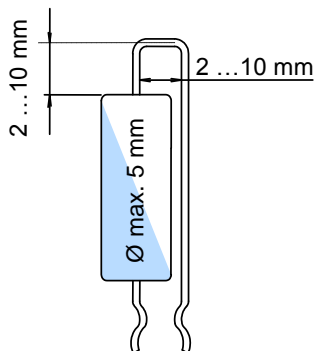
Bending form 3:



Bending form 3:

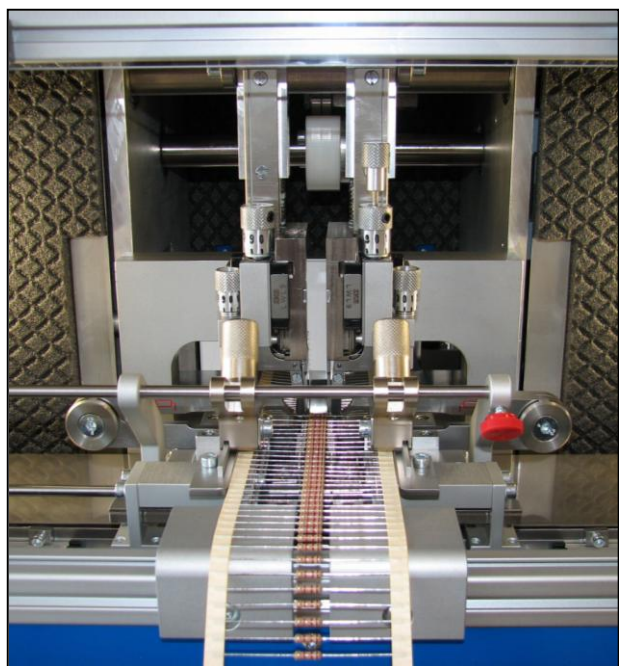
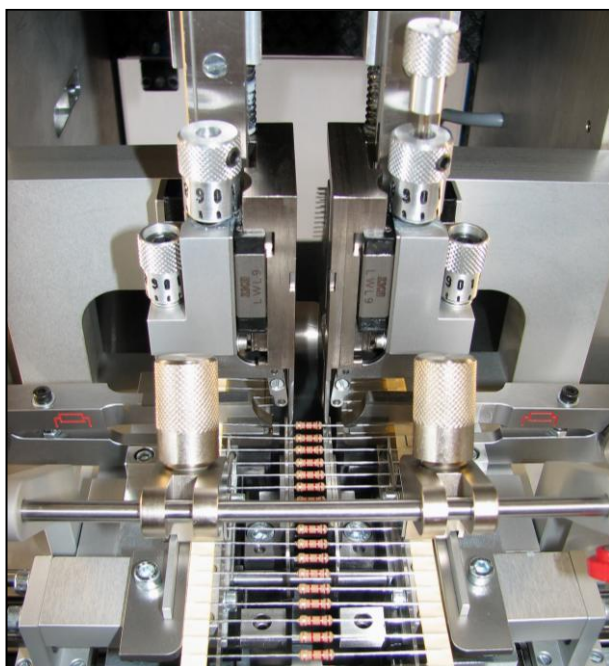
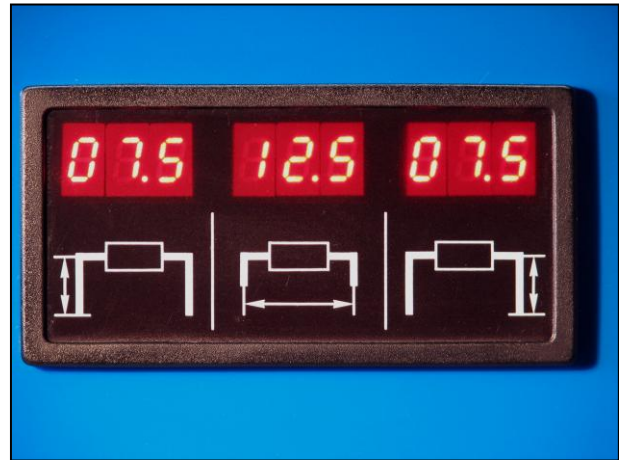
Standoff cutting, bending and crimping
Wire diameters from 0.4 – 1.3 mm
Body diameter: max. 35 mm
With a printed board thickness of 1.6 mm, the lead penetration depth is then 1.5 ± 0.1 mm (standard).

Bending form 4:



Bending form 4:

Upright / Crimping shapes: snap-in, standoff and straight cutting
Wire diameters from 0.4 – 0.9 mm without tool change
Body diameter: max. 5 mm
With a printed board thickness of 1.6 mm, the lead penetration depth is then 1.5 ± 0.1 mm (standard).



Weresch Automat GmbH